

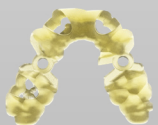
Pro 95

Production Workhorse

Accurate production and high throughput for all manner of dental appliances.



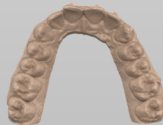
SprintRay Pro 95 is the perfect 3D printer for dental offices that want to deliver on the promises of in-office production. Featuring unmatched throughput, high accuracy, and a high flexibility, Pro95 is the right choice for most dental practices. Incredible accuracy, repeatability, and user-friendliness means you can always deliver an outstanding patient experience.



Surgical Guides



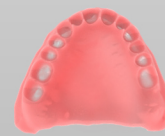
Study and Waxup Models



Models for Aligner Production



Indirect Bonding Trays



Digital Dentures and Try-ins

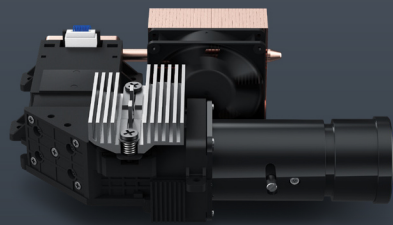


Occlusal Guards



SprintRay Pro 3D Printer

The Gold Standard for In-office Dental Manufacturing



Intensity, Meet Accuracy

The custom projector in SprintRay Pro delivers high-intensity light evenly across the build surface for perfect, accurate prints every time.

Bespoke 405nm LED projector



Always Cutting-edge

SprintRay Pro features advanced onboard electronics, enabling over-the-air updates that improve the printing experience.

Free over-the-air updates bring meaningful improvements.

Free over the air updates



Industrial Throughput

Enough throughput to handle the largest jobs. SprintRay Pro features a large build plate and rapid print speeds to meet the needs of even the most demanding offices.

Up to 3 inches per hour print speed



Open Certified Materials

Our unique resin ecosystem allows you to leverage the industry's greatest innovations, whether they come from us or one of our materials partners.



Over 50 resins to choose from